

GENERAL INFORMATION

Client Name	ABC		
Supplier Name	XYZ		
Factory Name	XYZ		
Inspection Location	Colombo – Sri Lanka		
Inspection Date	17 th November 2022		
P/O Number	25400	P/O Quantity	3531 Pieces
Sampling Plan	ISO 2859: Single , Normal	Sample Level	General Level II
AQL	Critical: Not Allowed Major : 2.5 , Minor : 4.0	Sample Size	125 Pieces
Item Number	67404		
Product Description	Girl Printed swim 2 pieces set – SPR2023		



INSPECTION SUMMARY

OVERALL CONCLUSION	Due to those Remarks, final result will be Pending to the client, requirement				
Category	Conform	Not Conform	Pending	N/A	Remarks
1. Quantity			✓		Remarks: 1.1 (Page – 2)
2. Workmanship	✓				(Page – 2 – 5)
3. Style, Color & Documentation			✓		Remarks: 3.1 – 3.3 (Page 5)
4. Data Measurement & On-Site Test			✓		Remarks: 4.1 – 4.2 (Page 6 – 11)
5. Shipping Marks & Packaging			✓		Remarks: 5.1 – 5.2 (Page 12)
6. Other Specifications / Requirements				N/A	
APPROVED BY IQMS SUPERVISOR:					

REMARKS

1.	Quantity	
1.1	Upon arrival at the factory, the actual packed quantity was observed to be 3,620 pieces in 47 cartons, in contrast to the supplier-provided purchase order (P.O) quantity of 3,531 pieces. Therefore, there is an excess quantity of +2.52% shipped against the P.O. quantity. Please refer quantity chart for the more details.	
2.	Workmanship	Nil
3.	Style, Color & Documentation	
3.1	Color reference, designs, placement was available from client. Therefore, actual findings have been recorded in the report, for details refer to attached photos.	
3.2	Reference samples were available from the client for product conformity check. Therefore, actual findings have been recorded in the report for reference.	
3.3	Inspected pieces are observed care label details deferent from tech pack. Therefore, actual findings have been recorded in report for reference.	

The findings in this document reflect the results of IQMS at the time and place of inspection only. No evidence of actual shipment is provided or implied. This report does not release the vendor or manufacturer from any obligations to repair, replace, or compensate for any defective product or part. IQMS assumes no responsibility or liability for any defects beyond the detectable limits of the specific inspection services ordered by the client. For more information on limitation of liability, please visit www.iqms.asia.

4.	Data Measurement & On-Site Test
4.1	For all items: The size measurement discrepancy was found on some measuring points. For details, please refer to size measurements chart as attached.
4.2	Wear test and GSM test was not conducted due to non-availability of Mannequin and GSM weight machine.

5.	Shipping Marks & Packaging
5.1	For all items: Shipping marks & Packing instructions details was not available form client; therefore, actual findings have been recorded in report. For details refer to below attached photo.
5.2	As per, EDI will be pasted during the dispatch. one shorter side (width) and one is main side (length).

6.	Other Specifications / Requirements	Nil
----	-------------------------------------	-----

INSPECTION DETAILS

1. QUANTITY		Pending						
P/O Number	Item Number	P/O Qty	Shipment Qty		Packed Quantity		Sample Size	
		Unit / Pcs	Unit / Pcs	Carton	Unit / Pcs	Carton	Unit / Pcs	Carton
25400	291- Girl Printed swim 2 pcs set	930	930	12	953	12	33	8
	310- Girl Printed swim 2 pcs set	898	898	12	921	12	30	8
	359- Girl Printed swim 2 pcs set	1011	1011	13	1037	13	42	8
	372- Girl Printed swim 2 pcs set	692	692	10	709	10	20	8
Total		3531	3531	47	3620	47	125	32

Total 32 cartons were randomly selected for sampling. During inspection time observed cartons numbering are not available.

QUANTITY BRACKDOWN

Size Code	291- Girl Printed swim 2 pcs set		310- Girl Printed swim 2 pcs set		359- Girl Printed swim 2 pcs set		372- Girl Printed swim 2 pcs set	
	Po# Qty	Packed Qty / Ctn	Po# Qty	Packed Qty / Ctn	Po# Qty	Packed Qty / Ctn	Po# Qty	Packed Qty / Ctn
85	29	32 - 1	29	31 - 1	32	35 - 1	22	24 - 1
90	62	65 - 1	59	62 - 1	67	70 - 1	46	48 - 1
100	95	98 - 1	92	96 - 1	103	107 - 1	70	73 - 1
110	141	144 - 2	136	140 - 2	153	157 - 2	105	107 - 1
120	212	215 - 2	206	209 - 2	232	235 - 3	160	162 - 2
130	181	184 - 2	174	177 - 2	196	199 - 2	134	136 - 2
140	126	129 - 2	121	123 - 2	136	139 - 2	93	95 - 1
150	84	86 - 1	81	83 - 1	92	95 - 1	62	64 - 1
Total	930	953 - 12	898	921 - 12	1011	1037 - 13	692	709 - 10

Inspection Standard: ANSI/ASQZ1.4 (MIL-STD-105E)		Defects		
Workmanship AQL		Critical	Major	Minor
Item:				
Sampling plan: Single , Normal	AQL	0	2.5	4.0
General Level II	Max. Allowed	0	7	10
Sampling Size: 125 Pieces	Defects Found	0	6	2

The findings in this document reflect the results of IQMS at the time and place of inspection only. No evidence of actual shipment is provided or implied. This report does not release the vendor or manufacturer from any obligations to repair, replace, or compensate for any defective product or part. IQMS assumes no responsibility or liability for any defects beyond the detectable limits of the specific inspection services ordered by the client. For more information on limitation of liability, please visit www.iqms.asia.

Inspection Standard: ANSI/ASQZ1.4 (MIL-STD-105E)		Defects		
Dimensional & Measurement AQL		Critical	Major	Minor
Item:				
Sampling plan: Single , Normal	AQL	0	2.5	4.0
Special Level 1	Max. Allowed	0	1	1
Sampling Size: 13 Pcs	Defects Found	0	0	0
Inspection Standard: ANSI/ASQZ1.4 (MIL-STD-105E)		Defects		
Special Functional & On -Site Test AQL		Critical	Major	Minor
Item:				
Sampling plan: Single , Normal	AQL	0	2.5	4.0
Special Level 1	Max. Allowed	0	1	1
Sampling Size: 8 Pcs	Defects Found	0	0	0

2. WORKMANSHIP		Conform / Not Conform / Pending	
Checkpoint / Test	Inspection Level	Inspection Method	Result
Product Visual & Workmanship Check	General Level II	• Product physical conditions, appearance & cleanliness	Conform
Remarks:			

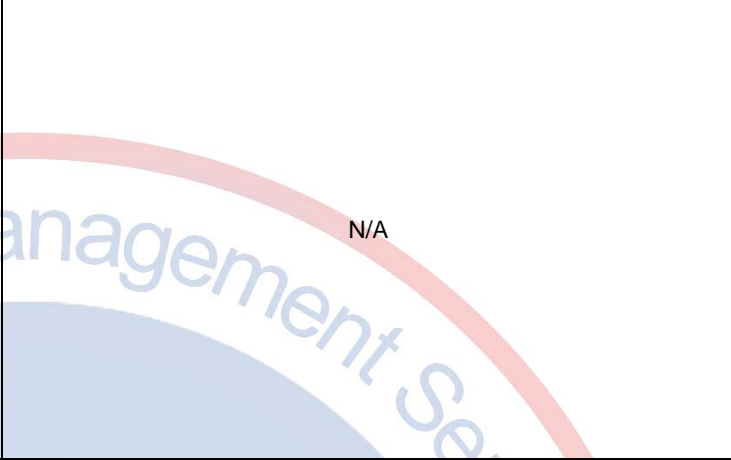
Defects Description	Critical	Major	Minor
Item: 291- Girl Printed swim 2 pcs set			
Hiking at back bottom seam (Size – 90 / Body)	-	1	-
Item: 310- Girl Printed swim 2 pcs set			
Pen mark on front surface (Size – 110 / Body)	-	1	-
Hiking at back bottom seam (Size – 90 / Body)	-	1	-
Item: 359- Girl Printed swim 2 pcs set			
Hiking at back bottom seam (Size – 90 & 100 / Body)	-	2	-
Dirt Stain Inside surface (Size – 90 / Bottom)	-	1	-
Untrimmed thread at front neck seam (Size- 110 / Body)	-	-	1
Item: 372- Girl Printed swim 2 pcs set			
Hanging thread at back neck seam (Size – 130 / Body)	-	-	1
Total Found	0	6	2
Max. Allowed	0	7	10
Sample Size	125 pcs	125 pcs	125 pcs

Specia Attention Point: Other than individual defects any batch defects found,
Nil

The Following field test included in workmanship check:
Labeling Check
Pairing Check

Reference Photos of Defects Found

Item: 291- Girl Printed swim 2 pcs set



Hiking at back bottom seam - Ma

Item: 310- Girl Printed swim 2 pcs set



Pen mark on front surface - Ma

Hiking at back bottom seam - Ma

Item: 359- Girl Printed swim 2 pcs set



Hiking at back bottom seam - Ma

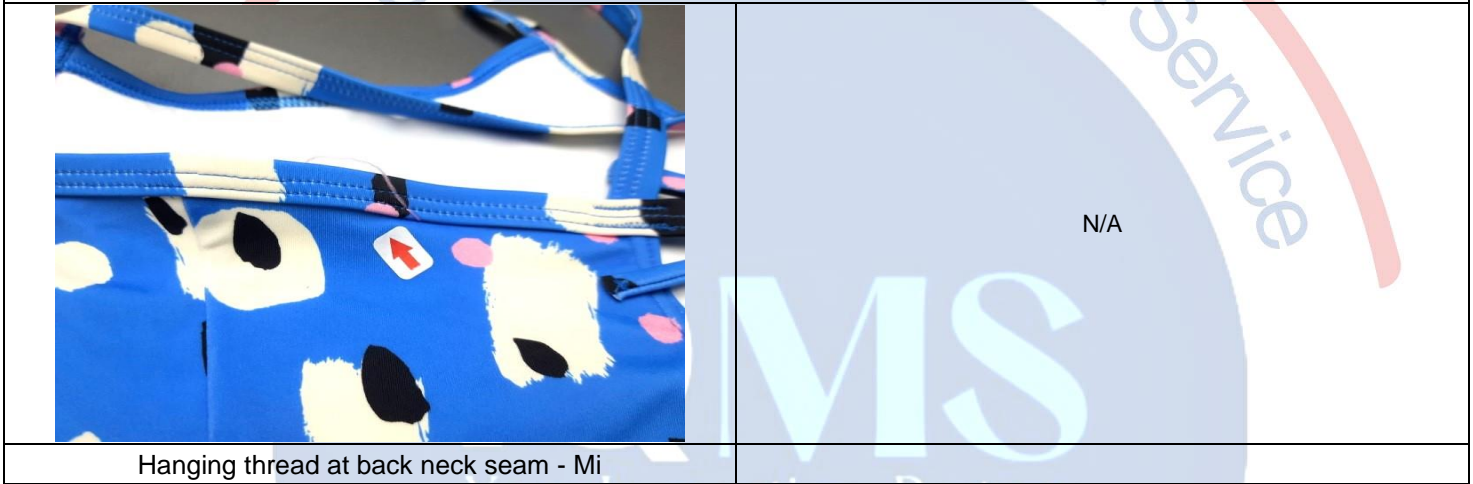
Hiking at back bottom seam - Ma



Dirt Stain Inside surface - Ma

Untrimmed thread at front neck seam - Mi

Item: 372- Girl Printed swim 2 pcs set



Hanging thread at back neck seam - Mi

N/A

3. STYLE , COLOR & DOCUMENTATION		Conform / Not Conform / Pending	
Checkpoint / Test	Inspection Level	Inspection Method	Result
Check the Conformity of the Product Compared to the approved Sample & Technical File of the Client.	Special Level 1	• Same style/materials with approved sample & technical file of the Client	Pending
Check the Conformity of the Product Compared to the Technical File of the Client.	General Level II	• Same style/materials with technical file of the client.	Pending
Remarks:			
3.2	Reference samples were available from the client for product conformity check. Therefore, actual findings have been recorded in the report for reference.		
3.3	Inspected pieces are observed care label details deferent from tech pack. Therefore, actual findings have been recorded in report for reference.		
<p>Care cheryl.kunde, April 28, 2022</p> <hr/> <p>Care Code</p> <p>W Machine Wash Cold Inside Out With Like Colors Do Not Bleach Line Dry Do Not Iron Or Dry Clean </p>			
Remarks 3.3 : Specification		Remarks 3.3 : Actual	

The findings in this document reflect the results of IQMS at the time and place of inspection only. No evidence of actual shipment is provided or implied. This report does not release the vendor or manufacturer from any obligations to repair, replace, or compensate for any defective product or part. IQMS assumes no responsibility or liability for any defects beyond the detectable limits of the specific inspection services ordered by the client. For more information on limitation of liability, please visit www.iqms.asia.

Discription	Conform	Not Conform	Pending
The inspected samples were consistent with	-	-	-
Product Specification	X		
Submitted sample	X		
Color lot check	X		
Digital photo	X		
Client Comment	-	-	-
Nil			

4. DATA MEASUREMENTS & ON -SITE TEST

4.1. DATA MEASUREMENTS		Conform / Not Conform / Pending	
Checkpoint / Test	Inspection Level	Inspection Method	Result
Check the product measurement	Special Level 1	• Measurement shall match product specification of the client.	Pending
Remarks:			
4.1	For all items: The size measurement discrepancy was found on some measuring points. For details, please refer to size measurements chart as attached.		
4.2	Wear test and GSM test was not conducted due to non-availability of Mannequin and GSM weight machine.		

Size Measurement Chart



Measurements Description	Item No.: 67404		291- Girl Printed swim 2 pcs set		310- Girl Printed swim 2 pcs set		359- Girl Printed swim 2 pcs set		372- Girl Printed swim 2 pcs set	
	Tol ["]	85	1	2	3	4	5	6	7	8
Points of Measurements Body (Inches)										
Front body length- HPS to sweep edge	1/4	10	-1/4	-1/8	-1/4	-1/8	+1/8	✓	-1/4	-1/8
Front Neck Width - outer edge to outer	1/4	5 3/4	-1/8	+1/8	-1/8	-1/4	-1/4	-1/8	1/8	-1/4
CF Bra Length- top edge to bottom edge	1/4	6 7/8	+1/4	+1/8	+1/8	+1/4	-1/4	-1/8	✓	-1/8
CB Bra Length- top edge to bottom edge - measure from btm of keyhole	1/4	2 1/4	-1/8	+1/8	+1/8	+1/4	-1/4	-1/4	-1/4	-1/8
Front Armhole along curve - SS to strap	1/8	4 3/8	-1/8	-1/8	-1/8	✓	-1/8	-1/8	-1/8	-1/8
Chest width at armhole	1/4	9 3/4	-1/8	-1/8	+1/8	+1/4	-1/8	-1/8	-1/8	-1/8
Sweep width-straight	1/4	8	-1/4	-1/8	+1/8	+1/8	+1/4	+1/8	-1/4	-1/8
Keyhole length - top edge to bottom	1/8	2	-1/8	-1/8	+1/8	+1/8	-1/8	-1/8	-1/8	-1/8
Keyhole width - edge to edge at top	1/8	2 1/2	-1/8	-1/8	+1/8	-1/8	✓	-1/8	-1/8	-1/8
Strap length	1/4	9 1/8	+1/8	+1/8	-1/4	-1/4	✓	-1/8	-1/8	-1/8

Measurements Description	Item No.: 67404		291- Girl Printed swim 2 pcs set		310- Girl Printed swim 2 pcs set		359- Girl Printed swim 2 pcs set		372- Girl Printed swim 2 pcs set	
	Tol ["]	90	1	2	3	4	5	6	7	8
Points of Measurements Body (Inches)										
Front body length- HPS to sweep edge	1/4	10 1/2	-1/8	+1/8	+1/4	+1/4	+1/8	-1/8	-1/4	-1/8
Front Neck Width - outer edge to outer	1/4	6	-1/4	+1/8	+1/4	+1/8	-1/8	-1/8	-1/8	-1/8
CF Bra Length- top edge to bottom edge	1/4	7 1/4	+1/8	+1/4	+1/8	+1/4	-1/4	-1/4	-1/8	-1/8
CB Bra Length- top edge to bottom edge - measure from btm of keyhole	1/4	2 1/2	+1/8	-1/8	+1/8	+1/8	✓	-1/8	1/8	1/8
Front Armhole along curve - SS to strap	1/8	4 1/2	-1/8	-1/8	+1/8	+1/8	✓	-1/8	-1/8	-1/8
Chest width at armhole	1/4	10 1/4	-1/4	+1/8	-1/4	-1/8	-1/8	-1/8	-1/8	-1/8
Sweep width-straight	1/4	8 1/2	-1/8	-1/8	-1/8	+1/8	✓	-1/8	-1/8	-1/8
Keyhole length - top edge to bottom edge	1/8	2	-1/8	+1/8	-1/8	-1/8	✓	✓	+1/8	-1/8
Keyhole width - edge to edge at top	1/8	2 1/2	-1/8	-1/8	-1/8	-1/8	-1/8	-1/8	+1/8	-1/8
trap length	1/4	9 1/2	+1/4	+1/4	+1/4	+1/8	✓	✓	-1/4	-1/4

The findings in this document reflect the results of IQMS at the time and place of inspection only. No evidence of actual shipment is provided or implied. This report does not release the vendor or manufacturer from any obligations to repair, replace, or compensate for any defective product or part. IQMS assumes no responsibility or liability for any defects beyond the detectable limits of the specific inspection services ordered by the client. For more information on limitation of liability, please visit www.iqms.asia.

Measurements Description	Item No.: 67404		291- Girl Printed swim 2 pcs set		310- Girl Printed swim 2 pcs set		359- Girl Printed swim 2 pcs set		372- Girl Printed swim 2 pcs set	
Points of Measurements Body (Inches)	Tol ["]	100	1	2	3	4	5	6	7	8
Front body length- HPS to sweep edge	1/4	11	+1/8	+1/4	-1/4	-1/4	-1/4	-1/4	-1/8	+1/8
Front Neck Width - outer edge to outer	1/4	6 1/4	+1/8	+1/8	-1/4	-1/4	+1/4	-1/4	+1/4	+1/8
CF Bra Length- top edge to bottom edge	1/4	7 5/8	+1/8	+1/4	-1/4	-1/8	-1/8	-1/8	-1/4	-1/8
CB Bra Length- top edge to bottom edge - measure from <u>btm</u> of keyhole	1/4	2 3/4	+1/8	+1/8	-1/8	-1/4	-1/8	-1/4	-1/8	-1/8
Front Armhole along curve - SS to strap	1/8	4 5/8	-1/8	-1/8	-1/8	+1/8	-1/8	-1/8	+1/8	+1/8
Chest width at armhole	1/4	10 3/4	-1/8	-1/8	+1/4	+1/8	+1/8	+1/8	-1/8	+1/8
Sweep width-straight	1/4	9	-1/8	-1/8	+1/4	+1/8	+1/4	+1/8	+1/8	-1/8
Keyhole length - top edge to bottom edge	1/8	2 1/8	-1/8	-1/8	+1/8	+1/8	+1/8	+1/8	-1/8	-1/8
Keyhole width - edge to edge at top	1/8	2 5/8	-1/8	+1/8	+1/8	+1/8	+1/8	+1/8	-1/8	-1/8
Strap length	1/4	9 7/8	+1/8	+1/4	-1/8	-1/4	+1/8	+1/8	+1/8	+1/8
Measurements Description	Item No.: 67404		291- Girl Printed swim 2 pcs set		310- Girl Printed swim 2 pcs set		359- Girl Printed swim 2 pcs set		372- Girl Printed swim 2 pcs set	
Points of Measurements Body (Inches)	Tol ["]	110	1	2	3	4	5	6	7	8
Front body length- HPS to sweep edge	1/4	11 1/2	+1/4	+1/4	-1/8	+1/8	✓	-1/8	+1/8	✓
Front Neck Width - outer edge to outer	1/4	6 1/2	-1/8	-1/4	✓	-1/8	-1/4	-1/8	-1/8	+1/8
CF Bra Length- top edge to bottom edge	1/4	8	-1/4	-1/8	+1/8	+1/8	-1/8	-1/8	+1/8	-1/8
CB Bra Length- top edge to bottom edge - measure from <u>btm</u> of keyhole	1/4	3	+1/8	+1/8	+1/4	+1/4	-1/8	-1/4	+1/4	+1/4
Front Armhole along curve - SS to strap	1/8	4 3/4	-1/8	-1/8	+1/8	+1/8	-1/8	✓	+1/8	+1/4
Chest width at armhole	1/4	11 1/4	+1/8	+1/8	+1/8	+1/4	-1/4	✓	+1/8	+1/8
Sweep width-straight	1/4	9 1/2	-1/8	+1/8	-1/8	-1/8	-1/8	+1/8	✓	✓
Keyhole length - top edge to bottom edge	1/8	2 1/4	-1/8	+1/8	+1/8	+1/8	-1/8	+1/8	-1/8	+1/8
Keyhole width - edge to edge at top	1/8	2 3/4	-1/8	-1/8	-1/8	-1/8	+1/8	+1/8	-1/8	+1/8
Strap length	1/4	10 1/4	-1/4	-1/8	+1/8	+1/8	-1/8	-1/8	-1/4	-1/8

Measurements Description	Item No.: 67404		291- Girl Printed swim 2 pcs set		310- Girl Printed swim 2 pcs set		359- Girl Printed swim 2 pcs set		372- Girl Printed swim 2 pcs set	
Points of Measurements Body (Inches)	Tol ["]	120	1	2	3	4	5	6	7	8
Front body length- HPS to sweep edge	1/4	12	-1/4	+1/8	-1/8	-1/4	+1/8	✓	-1/4	+1/8
Front Neck Width - outer edge to outer	1/4	6 3/4	+1/8	+1/8	+1/8	+1/4	-1/4	-1/8	+1/8	+1/8
CF Bra Length- top edge to bottom edge	1/4	8 3/8	+1/8	+1/8	+1/4	+1/4	-1/4	-1/8	+1/4	-1/4
CB Bra Length- top edge to bottom edge - measure from <u>btm</u> of keyhole	1/4	3 1/4	-1/4	+1/8	-1/8	+1/8	-1/4	-1/8	+1/8	-1/4
Front Armhole along curve - SS to strap	1/8	4 7/8	+1/8	+1/8	+1/8	+1/8	-1/8	-1/8	✓	-1/8
Chest width at armhole	1/4	11 3/4	-1/4	-1/8	-1/4	-1/8	-1/4	-1/8	-1/8	-1/4
Sweep width-straight	1/4	10	-1/8	-1/8	+1/8	+1/4	-1/8	✓	✓	-1/8
Keyhole length - top edge to bottom edge	1/8	2 3/8	-1/8	-1/8	-1/8	-1/8	-1/8	-1/8	-1/8	-1/8
Keyhole width - edge to edge at top	1/8	2 7/8	-1/8	-1/8	-1/8	-1/8	+1/8	✓	-1/8	+1/8
Strap length	1/4	10 5/8	-1/8	-1/8	-1/8	-1/8	-1/8	✓	-1/8	✓
Measurements Description	Item No.: 67404		291- Girl Printed swim 2 pcs set		310- Girl Printed swim 2 pcs set		359- Girl Printed swim 2 pcs set		372- Girl Printed swim 2 pcs set	
Points of Measurements Body (Inches)	Tol ["]	130	1	2	3	4	5	6	7	8
Front body length- HPS to sweep edge	1/4	12 1/2	+1/8	+1/8	+1/8	+1/4	+1/8	+1/8	+1/4	+1/4
Front Neck Width - outer edge to outer	1/4	7	+1/4	+1/8	+1/8	+1/4	-1/4	-1/8	-1/8	✓
CF Bra Length- top edge to bottom edge	1/4	8 3/4	-1/8	+1/8	-1/8	-1/8	-1/8	-1/8	-1/4	-1/8
CB Bra Length- top edge to bottom edge - measure from <u>btm</u> of keyhole	1/4	3 1/2	-1/4	-1/8	-1/8	-1/8	-1/4	-1/8	-1/4	-1/8
Front Armhole along curve - SS to strap	1/8	5	+1/8	+1/8	+1/8	+1/8	+1/4	+1/8	+1/8	+1/8
Chest width at armhole	1/4	12 1/4	-1/4	✓	✓	+1/4	✓	+1/8	-1/4	-1/8
Sweep width-straight	1/4	10 1/2	✓	+1/8	✓	+1/4	✓	+1/8	✓	-1/4
Keyhole length - top edge to bottom edge	1/8	2 1/2	+1/8	+1/8	+1/8	+1/8	✓	+1/8	-1/8	-1/8
Keyhole width - edge to edge at top	1/8	3	✓	✓	-1/8	-1/8	-1/8	-1/8	+1/8	+1/8
Strap length	1/4	11	✓	+1/8	-1/8	-1/8	✓	✓	+1/8	+1/8

The findings in this document reflect the results of IQMS at the time and place of inspection only. No evidence of actual shipment is provided or implied. This report does not release the vendor or manufacturer from any obligations to repair, replace, or compensate for any defective product or part. IQMS assumes no responsibility or liability for any defects beyond the detectable limits of the specific inspection services ordered by the client. For more information on limitation of liability, please visit www.iqms.asia.

Measurements Description	Item No.: 67404		291- Girl Printed swim 2 pcs set		310- Girl Printed swim 2 pcs set		359- Girl Printed swim 2 pcs set		372- Girl Printed swim 2 pcs set	
	Tol ["]	140	1	2	3	4	5	6	7	8
Points of Measurements Body (Inches)										
Front body length- HPS to sweep edge	1/4	13	-1/4	-1/8	-1/4	-1/4	+1/4	✓	-1/4	+1/4
Front Neck Width - outer edge to outer	1/4	7 3/8	-1/4	-1/8	-1/4	-1/4	+1/4	+1/8	+1/8	-1/4
CF Bra Length- top edge to bottom edge	1/4	9 1/8	-1/8	-1/4	-1/8	+1/8	+1/4	+1/8	+1/8	-1/4
CB Bra Length- top edge to bottom edge - measure from <u>btn</u> of keyhole	1/4	3 3/4	-1/8	-1/8	+1/8	+1/4	+1/4	+1/8	+1/4	+1/8
Front Armhole along curve - SS to strap	1/8	5 1/8	-1/8	-1/8	-1/8	+1/8	-1/8	✓	✓	-1/8
Chest width at armhole	1/4	13	-1/4	-1/8	-1/8	-1/8	-1/4	-1/8	+1/4	-1/8
Sweep width-straight	1/4	11 1/4	-1/8	-1/8	+1/8	+1/8	-1/8	✓	-1/8	+1/4
Keyhole length - top edge to bottom edge	1/8	2 5/8	-1/8	-1/8	+1/8	+1/8	-1/8	-1/8	-1/8	✓
Keyhole width - edge to edge at top	1/8	3 1/8	-1/8	+1/8	+1/8	+1/8	+1/8	+1/8	-1/8	-1/8
Strap length	1/4	11 3/8	+1/8	+1/8	+1/8	+1/8	+1/8	+1/8	✓	+1/8
Measurements Description	Item No.: 67404		291- Girl Printed swim 2 pcs set		310- Girl Printed swim 2 pcs set		359- Girl Printed swim 2 pcs set		372- Girl Printed swim 2 pcs set	
Points of Measurements Body (Inches)	Tol ["]	150	1	2	3	4	5	6	7	8
Front body length- HPS to sweep edge	1/4	13 1/2	-1/8	+1/8	-1/4	-1/4	+1/8	+1/4	-1/4	+1/8
Front Neck Width - outer edge to outer	1/4	7 3/4	-1/4	1/8	-1/4	-1/4	-1/4	-1/8	-1/8	✓
CF Bra Length- top edge to bottom edge	1/4	9 1/2	+1/8	+1/8	-1/4	-1/4	-1/8	-1/4	-1/4	-1/4
CB Bra Length- top edge to bottom edge - measure from <u>btn</u> of keyhole	1/4	4	-1/8	-1/8	-1/8	-1/8	-1/8	-1/4	✓	-1/8
Front Armhole along curve - SS to strap	1/8	5 1/4	-1/8	-1/8	+1/8	+1/8	+1/8	-1/8	-1/8	-1/8
Chest width at armhole	1/4	13 3/4	-1/8	-1/8	+1/4	+1/8	-1/4	-1/8	+1/8	-1/8
Sweep width-straight	1/4	12	-1/8	-1/8	+1/8	+1/8	-1/8	-1/8	-1/4	-1/8
Keyhole length - top edge to bottom edge	1/8	2 3/4	-1/8	-1/8	+1/8	✓	-1/8	-1/8	+1/8	-1/8
Keyhole width - edge to edge at top	1/8	3 1/4	-1/8	-1/8	+1/8	+1/8	-1/8	-1/8	+1/8	-1/8
Strap length	1/4	11 3/4	-1/8	-1/8	-1/8	-1/8	-1/8	-1/8	✓	-1/8

+

Measurements Description	Item No.: 67404		291- Girl Printed swim 2 pcs set		310- Girl Printed swim 2 pcs set		359- Girl Printed swim 2 pcs set		372- Girl Printed swim 2 pcs set	
	Tol ["]	85	1	2	3	4	5	6	7	8
Points of Measurements Bottom (Inch)										
Bottom Waist- outer edge to outer edge	1/4	8 3/4	+1/4	-1/8	-1/8	-1/4	-1/4	-1/8	-1/4	-1/8
Hip width- edge to edge .75" abv leg	1/4	8 1/4	✓	✓	-1/4	-1/4	-1/4	-1/8	-1/4	-1/4
Front rise- crotch seam to top edge	1/4	7	+1/4	+1/4	-1/8	-1/8	-1/4	-1/8	-1/8	+1/4
Back rise- crotch seam to top edge	1/4	6 1/8	✓	+1/4	-1/8	+1/8	+1/8	✓	-1/8	+1/8
Crotch panel length at center- <u>sm</u> to <u>sm</u>	1/4	2 7/8	✓	+1/4	-1/8	+1/8	-1/4	-1/8	+1/4	-1/8
Placement- crotch upper	0	2 7/8	✓	✓	✓	✓	✓	✓	✓	✓
Crotch upper width - see VPCU	3/8	2 1/4	+1/8	✓	-1/8	+1/8	+1/4	+1/8	+1/8	-1/8
Placement- crotch at narrowest	0	2	✓	✓	✓	✓	✓	✓	✓	✓
Crotch width at narrowest - see VPCN	1/4	2	✓	+1/4	-1/4	-1/4	-1/8	-1/4	✓	+1/8
Front leg opening- seam to seam	1/8	6 5/8	✓	-1/8	-1/8	-1/8	✓	-1/8	-1/8	-1/8
Back leg opening- seam to seam	1/8	4 1/2	✓	-1/8	-1/8	-1/8	+1/16	+1/8	-1/4	+1/8
Leg opening on fold	1/4	5 1/2	+1/8	✓	-1/8	-1/8	-1/4	+1/8	+1/8	+1/4
Out seam length- edge to edge	1/8	2 3/8	✓	-1/8	-1/8	-1/8	-1/8	-1/8	+1/8	✓

PRE-SHIPMENT INSPECTION REPORT

Report No: PSIHA17112022- 010

Measurements Description	Item No.: 67404		291- Girl Printed swim 2 pcs set		310- Girl Printed swim 2 pcs set		359- Girl Printed swim 2 pcs set		372- Girl Printed swim 2 pcs set	
	Tol ["]	90	1	2	3	4	5	6	7	8
Points of Measurements Bottom(Inch)	1/4	9 1/4	+1/8	✓	-1/4	-1/8	-1/4	-1/8	-1/4	-1/8
Bottom Waist- outer edge to outer edge	1/4	9	✓	✓	-1/8	+1/8	+1/4	+1/8	-1/8	+1/8
Hip width- edge to edge .75" abv leg	1/4	7 1/2	✓	-1/4	+1/8	+1/4	-1/8	✓	✓	-1/4
Front rise- crotch seam to top edge	1/4	6 1/2	-1/8	✓	+1/4	+1/8	+1/8	+1/8	+1/8	-1/8
Back rise- crotch seam to top edge	1/4	3 1/4	✓	+1/8	+1/4	+1/8	+1/8	✓	+1/8	✓
Crotch panel length at center- <u>sm</u> to <u>sm</u>	0	3 1/4	✓	✓	✓	✓	✓	✓	✓	✓
Placement- crotch upper	3/8	2 1/2	-1/8	✓	-1/8	-1/8	+1/4	-1/8	+1/4	-1/4
Crotch upper width - see VPCU	0	2	✓	✓	✓	✓	✓	✓	✓	✓
Placement- crotch at narrowest	1/4	2	-1/8	-1/8	-1/8	-1/8	-1/8	-1/8	-1/8	-1/8
Crotch width at narrowest - see VPCN	1/8	7 3/8	✓	+1/8	-1/8	-1/8	-1/8	-1/8	✓	+1/8
Front leg opening- seam to seam	1/8	5	+1/8	+1/8	+1/8	+1/8	+1/8	+1/8	+1/8	+1/8
Back leg opening- seam to seam	1/4	6 1/8	✓	+1/8	+1/8	+1/8	+1/8	+1/8	✓	+1/8
Leg opening on fold	1/8	2 1/2	+1/8	-1/8	+1/8	+1/8	-1/8	✓	✓	+1/8
Out seam length- edge to edge										

Measurements Description	Item No.: 67404		291- Girl Printed swim 2 pcs set		310- Girl Printed swim 2 pcs set		359- Girl Printed swim 2 pcs set		372- Girl Printed swim 2 pcs set	
	Tol ["]	100	1	2	3	4	5	6	7	8
Points of Measurements Bottom(Inch)	1/4	9 3/4	✓	✓	-1/4	+1/4	-1/8	+1/8	-1/4	✓
Bottom Waist- outer edge to outer edge	1/4	9 3/4	✓	+1/4	+1/4	+1/4	-1/4	-1/8	-1/4	✓
Hip width- edge to edge .75" abv leg	1/4	8	+1/4	-1/4	-1/4	-1/8	+1/8	+1/4	+1/4	+1/8
Front rise- crotch seam to top edge	1/4	6 7/8	✓	+1/8	-1/8	-1/8	+1/4	+1/4	+1/8	-1/8
Back rise- crotch seam to top edge	1/4	3 5/8	✓	✓	+1/8	+1/8	+1/8	+1/4	✓	+1/8
Crotch panel length at center- <u>sm</u> to <u>sm</u>	0	3 5/8	✓	✓	✓	✓	✓	✓	✓	✓
Placement- crotch upper	3/8	2 3/4	+1/4	+1/8	+1/8	+1/8	-1/8	+1/4	+1/4	+1/8
Crotch upper width - see VPCU	0	2	✓	✓	✓	✓	✓	✓	✓	✓
Placement- crotch at narrowest	1/4	2	✓	-1/8	-1/8	-1/8	-1/8	+1/4	-1/8	-1/8
Crotch width at narrowest - see VPCN	1/8	8 1/8	+1/8	✓	+1/8	+1/8	+1/8	+1/8	+1/8	✓
Front leg opening- seam to seam	1/8	5 1/2	✓	+1/8	+1/8	+1/8	+1/8	+1/8	✓	+1/8
Back leg opening- seam to seam	1/4	6 3/4	✓	+1/8	+1/4	+1/8	+1/8	+1/8	+1/4	+1/8
Leg opening on fold	1/8	2 5/8	+1/8	✓	-1/8	-1/8	+1/8	+1/8	+1/8	✓
Out seam length- edge to edge										

Measurements Description	Item No.: 67404		291- Girl Printed swim 2 pcs set		310- Girl Printed swim 2 pcs set		359- Girl Printed swim 2 pcs set		372- Girl Printed swim 2 pcs set	
	Tol ["]	110	1	2	3	4	5	6	7	8
Points of Measurements Bottom(Inch)	1/4	10 1/4	+1/8	✓	-1/4	-1/4	-1/8	+1/8	+1/8	✓
Bottom Waist- outer edge to outer edge	1/4	10 1/2	✓	✓	-1/8	-1/4	-1/4	+1/4	✓	-1/4
Hip width- edge to edge .75" abv leg	1/4	8 1/2	-1/4	-1/4	-1/4	-1/8	+1/8	+1/4	-1/4	-1/4
Front rise- crotch seam to top edge	1/4	7 1/4	+1/8	+1/4	-1/8	-1/8	+1/4	+1/4	+1/8	+1/4
Back rise- crotch seam to top edge	1/4	4	+1/4	+1/8	-1/8	+1/8	+1/4	+1/8	+1/8	+1/4
Crotch panel length at center- <u>sm</u> to <u>sm</u>	0	4	✓	✓	✓	✓	✓	✓	✓	✓
Placement- crotch upper	3/8	3	✓	+1/8	+1/4	+1/4	+1/4	+1/8	+1/8	+1/4
Crotch upper width - see VPCU	0	2 1/2	✓	✓	✓	✓	✓	✓	✓	✓
Placement- crotch at narrowest	1/4	2 1/4	-1/4	-1/8	-1/4	-1/8	-1/8	-1/8	-1/8	-1/4
Crotch width at narrowest - see VPCN	1/8	8 7/8	+1/8	-1/4	-1/8	-1/8	+1/8	+1/8	✓	-1/8
Front leg opening- seam to seam	1/8	6	-1/8	+1/8	-1/8	+1/8	+1/8	+1/8	-1/8	+1/8
Back leg opening- seam to seam	1/4	7 3/8	✓	+1/4	+1/4	+1/8	+1/4	+1/8	+1/4	+1/8
Leg opening on fold	1/8	2 3/4	+1/8	-1/8	+1/8	+1/8	+1/8	+1/8	+1/8	✓
Out seam length- edge to edge										

The findings in this document reflect the results of IQMS at the time and place of inspection only. No evidence of actual shipment is provided or implied. This report does not release the vendor or manufacturer from any obligations to repair, replace, or compensate for any defective product or part. IQMS assumes no responsibility or liability for any defects beyond the detectable limits of the specific inspection services ordered by the client. For more information on limitation of liability, please visit www.iqms.asia.

**PRE-SHIPMENT
INSPECTION REPORT**

Report No: PSIHA17112022- 010

Measurements Description	Item No.: 67404		291- Girl Printed swim 2 pcs set		310- Girl Printed swim 2 pcs set		359- Girl Printed swim 2 pcs set		372- Girl Printed swim 2 pcs set	
	Tol ["]		1	2	3	4	5	6	7	8
Points of Measurements Bottom(Inch)		120								
Bottom Waist- outer edge to outer edge	1/4	10 3/4	+1/8	✓	-1/4	-1/8	+1/8	+1/8	✓	-1/4
Hip width- edge to edge .75" abv leg	1/4	11 1/4	✓	✓	-1/8	-1/4	+1/4	+1/4	+1/4	-1/8
Front rise- crotch seam to top edge	1/4	9	+1/4	+1/8	-1/4	+1/8	-1/8	-1/8	✓	+1/4
Back rise- crotch seam to top edge	1/4	7 5/8	✓	✓	+1/8	+1/8	-1/8	+1/4	+1/8	+1/8
Crotch panel length at center- sm to sm	1/4	4 3/8	✓	+1/4	-1/4	-1/8	+1/4	+1/4	-1/8	+1/4
Placement- crotch upper	0	4 3/8	✓	✓	✓	✓	✓	✓	✓	✓
Crotch upper width - see VPCU	3/8	3 1/4	✓	+1/4	-1/8	-1/8	✓	+1/4	+1/4	-1/8
Placement- crotch at narrowest	0	2 1/2	✓	✓	✓	✓	✓	✓	✓	✓
Crotch width at narrowest - see VPCN	1/4	2 1/4	✓	-1/8	-1/8	-1/8	-1/8	+1/4	-1/8	✓
Front leg opening- seam to seam	1/8	9 5/8	-1/8	+1/8	+1/8	+1/8	-1/8	+1/8	+1/8	+1/8
Back leg opening- seam to seam	1/8	6 1/2	+1/8	✓	+1/8	+1/8	-1/8	-1/8	+1/8	-1/8
Leg opening on fold	1/4	8	+1/4	✓	+1/4	+1/4	-1/8	+1/8	+1/4	✓
Out seam length- edge to edge	1/8	2 7/8	-1/8	+1/8	+1/8	+1/8	-1/8	+1/8	+1/8	-1/8

Measurements Description	Item No.: 67404		291- Girl Printed swim 2 pcs set		310- Girl Printed swim 2 pcs set		359- Girl Printed swim 2 pcs set		372- Girl Printed swim 2 pcs set	
	Tol ["]		1	2	3	4	5	6	7	8
Points of Measurements Bottom(Inch)		130								
Bottom Waist- outer edge to outer edge	1/4	11 1/4	+1/4	✓	+1/4	+1/4	✓	+1/8	✓	+1/4
Hip width- edge to edge .75" abv leg	1/4	12	+1/4	-1/4	-1/8	-1/4	-1/4	+1/4	-1/8	-1/4
Front rise- crotch seam to top edge	1/4	9 1/2	+1/8	-1/4	+1/4	+1/8	-1/4	-1/8	-1/8	-1/4
Back rise- crotch seam to top edge	1/4	8	+1/8	-1/4	+1/4	+1/8	-1/4	-1/8	-1/4	-1/4
Crotch panel length at center- sm to sm	1/4	4 3/4	-1/4	✓	+1/4	+1/8	-1/8	-1/4	+1/8	✓
Placement- crotch upper	0	4 3/4	✓	✓	✓	✓	✓	✓	✓	✓
Crotch upper width - see VPCU	3/8	3 1/2	+3/8	-1/8	+1/4	+3/8	-1/8	✓	✓	+1/4
Placement- crotch at narrowest	0	2 1/2	✓	✓	✓	✓	✓	✓	✓	✓
Crotch width at narrowest - see VPCN	1/4	2 1/4	+1/4	-1/8	-1/8	-1/8	-1/4	-1/4	-1/8	-1/4
Front leg opening- seam to seam	1/8	10 3/8	✓	+1/8	+1/8	+1/8	+1/8	+1/8	✓	+1/8

Measurements Description	Item No.: 67404		291- Girl Printed swim 2 pcs set		310- Girl Printed swim 2 pcs set		359- Girl Printed swim 2 pcs set		372- Girl Printed swim 2 pcs set	
	Tol ["]		1	2	3	4	5	6	7	8
Points of Measurements Bottom(Inch)		140								
Bottom Waist- outer edge to outer edge	1/4	12	✓	+1/4	-1/4	-1/4	+1/4	+1/4	+1/4	+1/4
Hip width- edge to edge .75" abv leg	1/4	13	+1/4	+1/4	-1/8	-1/8	+1/4	+1/8	-1/8	+1/4
Front rise- crotch seam to top edge	1/4	10	✓	✓	-1/4	-1/8	-1/8	-1/4	+1/4	+1/8
Back rise- crotch seam to top edge	1/4	8 3/8	✓	+1/4	-1/4	-1/4	+1/4	+1/8	✓	+1/8
Crotch panel length at center- sm to sm	1/4	5 1/8	✓	+1/4	-1/8	+1/8	+1/4	+1/8	-1/8	+1/8
Placement- crotch upper	0	5 1/8	✓	✓	✓	✓	✓	✓	✓	✓
Crotch upper width - see VPCU	3/8	3 7/8	+1/8	+1/4	+1/8	+1/4	+1/4	+1/8	+1/8	+1/4
Placement- crotch at narrowest	0	2 1/2	✓	✓	✓	✓	✓	✓	✓	✓
Crotch width at narrowest - see VPCN	1/4	2 1/2	+1/4	+1/8	+1/8	+1/8	+1/4	+1/8	✓	+1/8
Front leg opening- seam to seam	1/8	11 1/8	+1/8	+1/8	+1/8	+1/8	✓	+1/8	-1/8	+1/8
Back leg opening- seam to seam	1/8	7 1/2	+1/8	+1/8	+1/8	+1/8	✓	+1/8	-1/8	-1/8
Leg opening on fold	1/4	9 1/4	+1/4	-1/8	-1/4	-1/8	+1/8	+1/8	+1/4	-1/4
Out seam length- edge to edge	1/8	3 1/8	-1/8	+1/8	-1/8	-1/8	+1/8	+1/8	+1/8	-1/8

The findings in this document reflect the results of IQMS at the time and place of inspection only. No evidence of actual shipment is provided or implied. This report does not release the vendor or manufacturer from any obligations to repair, replace, or compensate for any defective product or part. IQMS assumes no responsibility or liability for any defects beyond the detectable limits of the specific inspection services ordered by the client. For more information on limitation of liability, please visit www.iqms.asia.

Measurements Description	Item No.: 67404		291- Girl Printed swim 2 pcs set		310- Girl Printed swim 2 pcs set		359- Girl Printed swim 2 pcs set		372- Girl Printed swim 2 pcs set	
	Tol ["]	150	1	2	3	4	5	6	7	8
Points of Measurements Bottom(Inch)	1/4	12 3/4	+1/4	-1/4	-1/8	+1/8	+1/4	+1/8	+1/8	+1/4
Bottom Waist- outer edge to outer edge	1/4	14	✓	+1/4	+1/4	+1/4	+1/8	+1/8	✓	+1/4
Hip width- edge to edge .75" abv leg	1/4	10 1/2	+1/8	✓	-1/8	-1/8	+1/4	+1/8	+1/4	+1/8
Front rise- crotch seam to top edge	1/4	8 3/4	-1/8	-1/4	+1/8	+1/8	+1/8	+1/4	+1/4	+1/8
Back rise- crotch seam to top edge	1/4	5 1/2	+1/8	✓	+1/8	+1/4	+1/8	✓	✓	+1/8
Crotch panel length at center- sm to sm	0	5 1/2	✓	✓	✓	✓	✓	✓	✓	✓
Placement- crotch upper	3/8	4 1/4	+1/8	✓	-1/8	+1/4	+1/4	+1/8	✓	+1/4
Crotch upper width - see VPCU	0	2 1/2	✓	✓	✓	✓	✓	✓	✓	✓
Placement- crotch at narrowest	1/4	2 1/2	+1/8	-1/8	+1/4	+1/4	+1/4	+1/4	-1/4	+1/4
Crotch width at narrowest - see VPCN	1/8	11 7/8	-1/8	-1/8	-1/8	-1/8	+1/8	+1/8	-1/8	-1/8
Front leg opening- seam to seam	1/8	8	+1/8	✓	-1/8	-1/8	-1/8	+1/8	+1/8	-1/8
Back leg opening- seam to seam	1/4	9 7/8	-1/4	+1/8	-1/8	+1/8	+1/8	+1/4	-1/4	+1/8
Leg opening on fold	1/8	3 1/4	+1/8	-1/8	-1/8	+1/8	+1/8	✓	+1/8	+1/8
Out seam length- edge to edge										



4.2. ON – SITE TEST		Conform / Not Conform / Pending			
Checkpoint / Test		Inspection Level	Inspection Method		Result
Check the product functional and performance level		Special Level 1	• All the functional and performance check shall match product specification of the client and		Conform
Remarks:					
4.2	Wear test and GSM test was not conducted due to non-availability of Mannequin and GSM weight machine.				
Item	Specification	Sample Size	Conform	Not Conform	Pending
1) Smell test		5 samples/item	x		
2) Barcode readability check		5 samples/Barcode	x		
3) Wear test		3 sample/item			x
4) Carton assortment check		100% selected cartons	x		
5) Transportation drop test		1 carton/item	x		
6) Carton dimension		1 carton/item			x
7) Carton weight		1 carton/item			x
8) Size measurement check		3 pairs/item			x
9) Product weight		3 Samples/item			x
10) Pairing check		100% selected Samples	x		
11) Fabric weight check		3 Samples/item			x

Carton Dimension & Weight				
Item:	Carton Size Measurements – in (Inch)		Carton Weight – in (Kg)	
	Specification / (Marked on carton) (Length x Width x Hight)	Result	Specification (Marked on carton)	Result
291- Girl Printed swim 2 pcs set	N/A	24 x 15 x 14 / 24 x 15 x 7.5	N/A	12.42 / 3.30
310- Girl Printed swim 2 pcs set		24 x 15 x 14 / 24 x 15 x 7.5		12.26 / 3.30
359- Girl Printed swim 2 pcs set		24 x 15 x 14 / 24 x 15 x 7.5		11.94 / 5.08
372- Girl Printed swim 2 pcs set		24 x 15 x 14 / 24 x 15 x 7.5		12.24 / 2.76

The findings in this document reflect the results of IQMS at the time and place of inspection only. No evidence of actual shipment is provided or implied. This report does not release the vendor or manufacturer from any obligations to repair, replace, or compensate for any defective product or part. IQMS assumes no responsibility or liability for any defects beyond the detectable limits of the specific inspection services ordered by the client. For more information on limitation of liability, please visit www.iqms.asia.

5. SHIPPING MARKS & PACKAGING		Conform / Not Conform / Pending		
Checkpoint / Test	Inspection Level	Inspection Method	Result	
5.1	Packing Visual Check	Special Level 2	<ul style="list-style-type: none"> Packing method and conditions Retail package artworks Correct content within the package Quantity of items & accessories within the package Presence of correct version of printed literature within the package 	Pending
5.2	Shipping Marks	Special Level 2	<ul style="list-style-type: none"> Conform with client specifications. Shipping marks / labels and their position 	Pending
5.3	Barcode Visual Check	Special Level 2	<ul style="list-style-type: none"> All the barcodes need to be clean. Barcode type as requested. Positions as per client requirements 	Conform
Remarks:				
5.2	As per, EDI will be pasted during the dispatch. one shorter side (width) and one is main side (length).			

Shipping Marks Photos

	
5.1 Actual shipping Mark - 359 - Girl Printed swim 2 pcs set	5.1 Actual shipping Mark - 359 - Girl Printed swim 2 pcs set

Packing Photos

	
5:1 Actual – Packing view - 359 - Girl Printed swim 2 pcs set	5:1 Actual – Packing view - 359 - Girl Printed swim 2 pcs set

Remarks:

Only Item No: "359 - Girl Printed swim 2 pcs set" is listed here for your reference. For other items please refer the photo attached.

Packing Description:	Carton plies	5
Item:		
<ul style="list-style-type: none"> - 01 set were packed into a 01-barcode sticker with poly bag. - 23 to 109 set were packed in an Export Carton. - Each export carton was sealed with transparent gummed tape. 		

REFERENCE NOTES	
1.	Inspector required the factory to repair all defective samples before shipment.
2.	Draft report has been provided to the factory and defective points have been explained as well.
3.	The inspected cartons were not sealed because the factory did not repack them immediately after inspection.
4.	0 Pairs/ Item of production sample completed were drawn. Reason: For IQMS reference.

7. INSPECTION RELATED PHOTOS

01. Photo of Carton View

	
Carton Stacking View	Carton Stacking View
	
Carto Top View	Carton Front View (A)

The findings in this document reflect the results of IQMS at the time and place of inspection only. No evidence of actual shipment is provided or implied. This report does not release the vendor or manufacturer from any obligations to repair, replace, or compensate for any defective product or part. IQMS assumes no responsibility or liability for any defects beyond the detectable limits of the specific inspection services ordered by the client. For more information on limitation of liability, please visit www.iqms.asia.



Carton Front View (B)



Carton Side View (A)



Carton Side View (B)



Carton View



Carton Assortment Check



Cartn Ply Check



Cartin Weight Check



Cartin Weight Check

02. Photo of Packing View

01. 291- G Printed Easy 2pc Set-SPR23



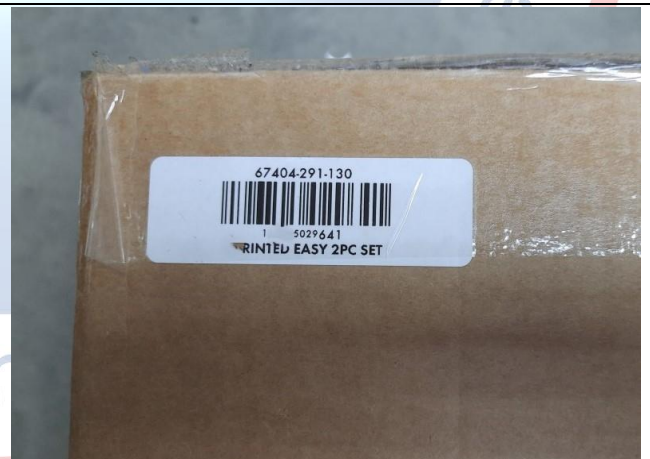
Carton Front View



Carton Side View



Carton Side View



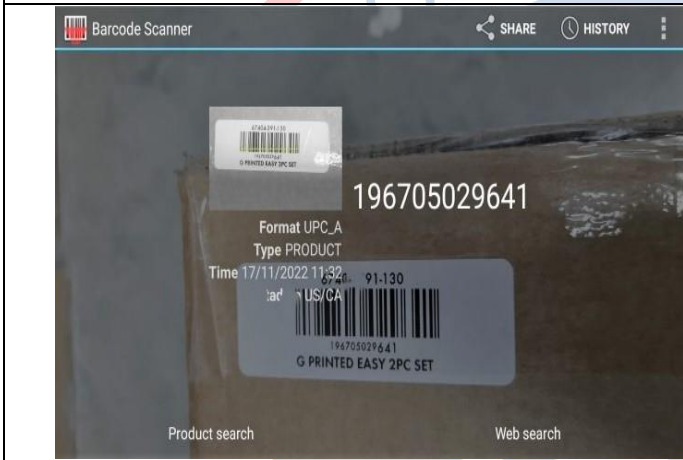
Carton Barcode Sticker View



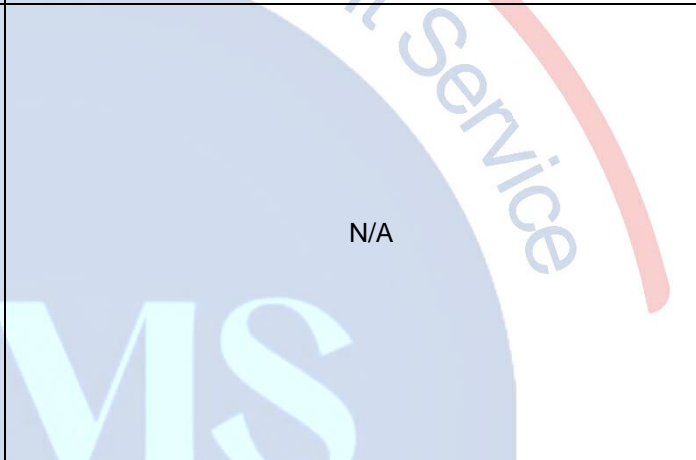
Carton open view



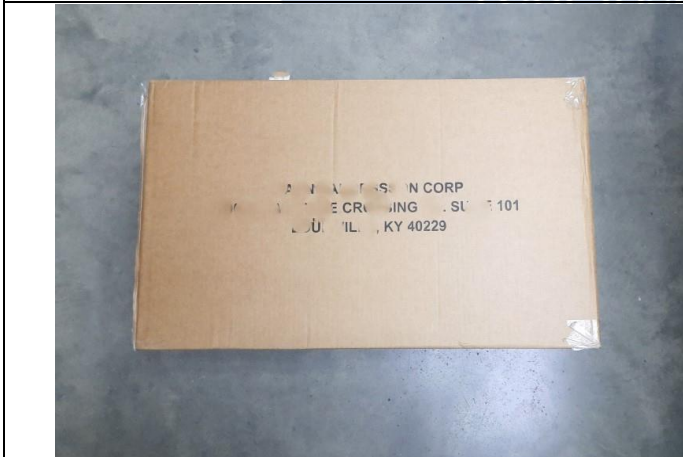
Carton View



Carton Barcode Scan View



02: 310- G Printed Easy 2pc Set-SPR23



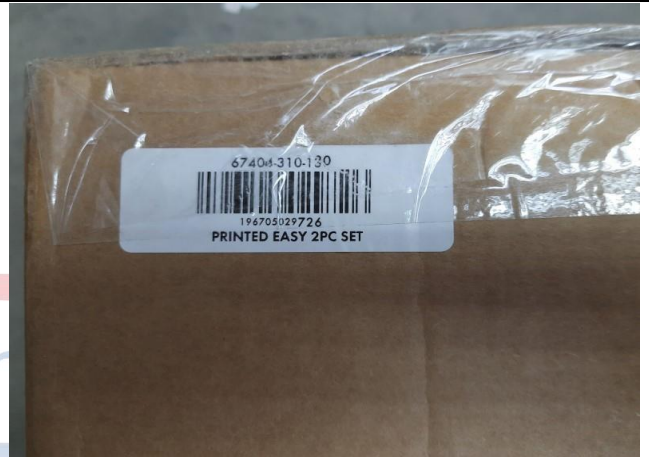
Carton Front View



Carton Side View



Carton Side View



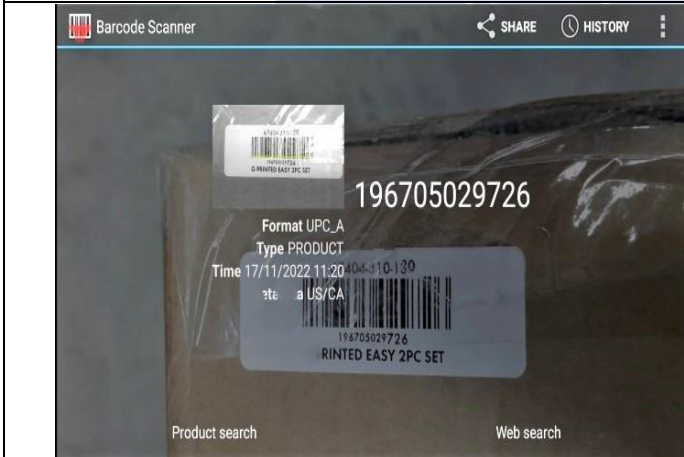
Carton Barcode Sticker View



Carton open view



Carton View

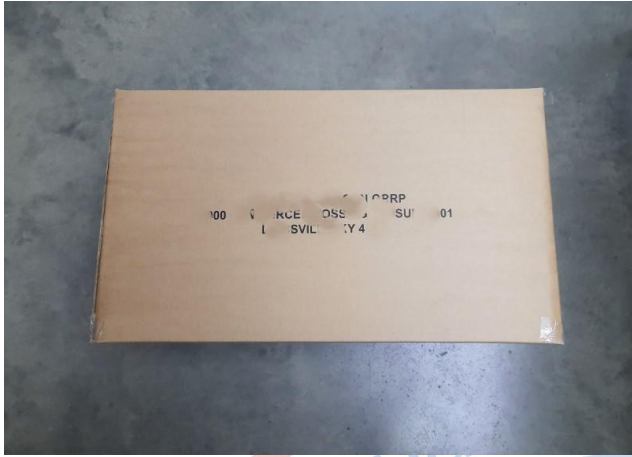


Carton Barcode Scan View



N/A

03. 359- G Printed Easy 2pc Set-SPR23



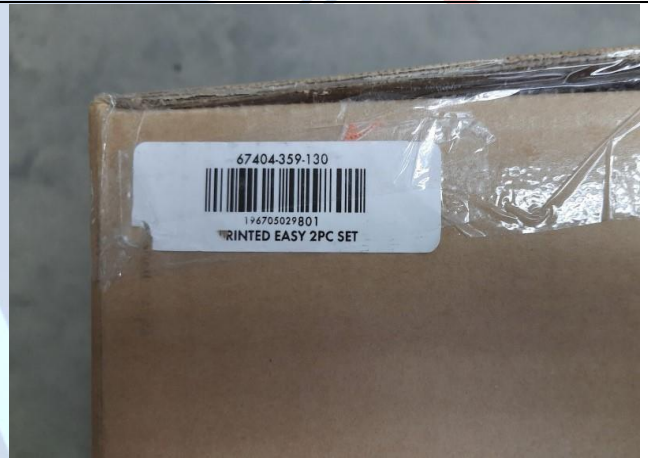
Carton Front View



Carton Side View



Carton Side View



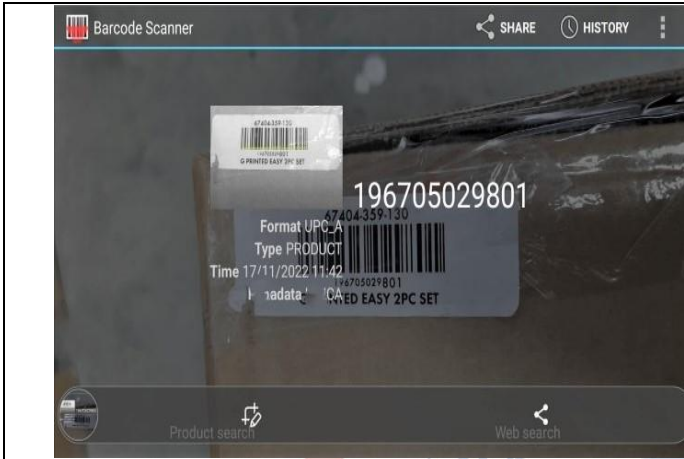
Carton Barcode Sticker View



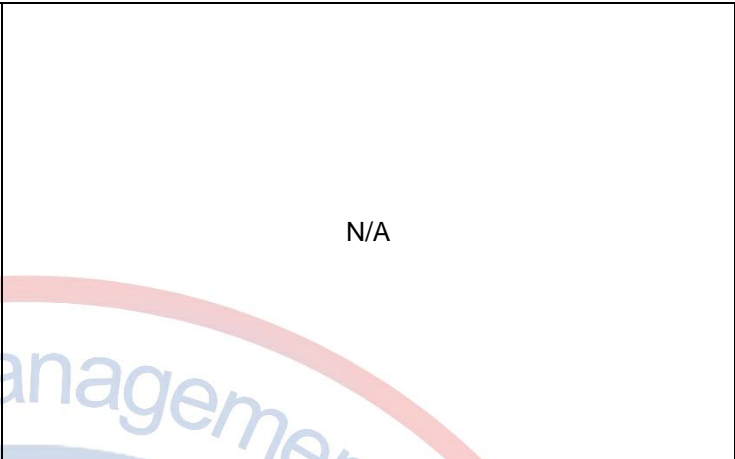
Carton open view



Carton View

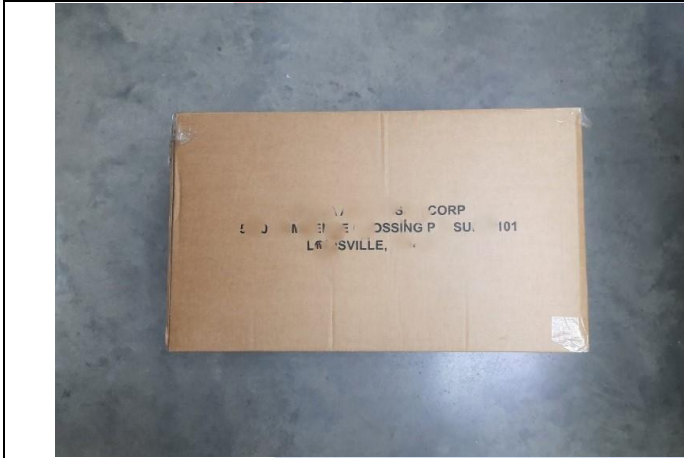


Carton Barcode Scan View



N/A

04. 372- G Printed Easy 2pc Set-SPR23



Carton Front View



Carton Side View



Carton Side View



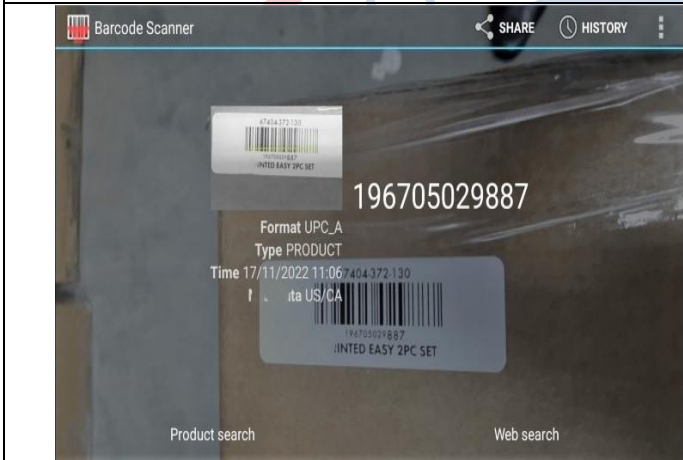
Carton Barcode Sticker View



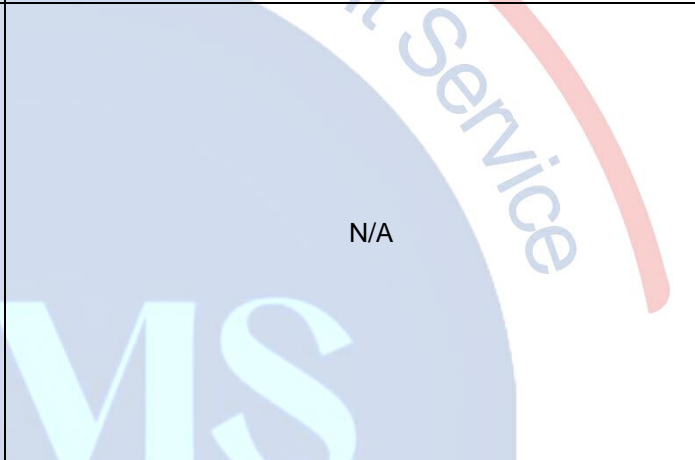
Carton open view



Carton View



Carton Barcode Scan View



Your Inspection Partner

03. Photo of Product View

01. 291- G Printed Easy 2pc Set-SPR23



Product Front View



Product Back View



Polybag Sticker View



Product polybag open view



Product Fold View - Front



Product Fold View - Back



Product Body Front View



Product Body Back View

	
<p>Product Bottom Front View</p>	<p>Product Bottom Back View</p>
	<p>N/A</p>
<p>Product View</p>	
<p>02. 310- G Printed Easy 2pc Set-SPR23</p>	
	
<p>Product Front View</p>	<p>Product Back View</p>



Polybag Sticker View



Product polybag open view



Product Fold View – Front



Product Fold View - Back



Product Body Front View



Product Body Back View

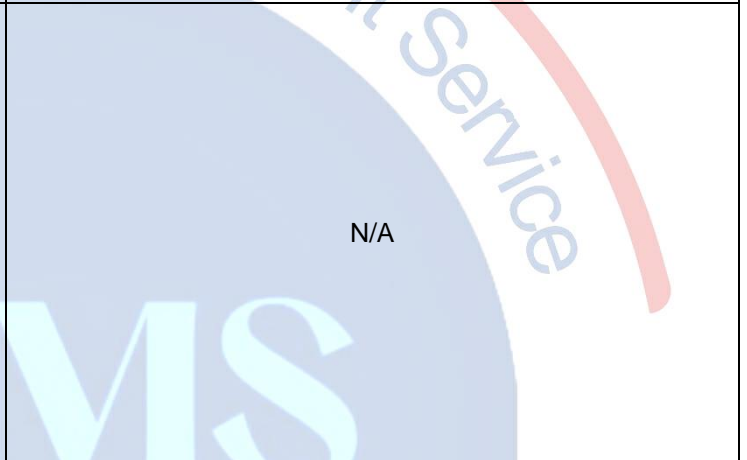


Product Bottom Front View

Product Bottom Back View



Product View



N/A

03. 359- G Printed Easy 2pc Set-SPR23



Product Front View



Product Back View



Polybag Sticker View



Product polybag open view



Product Fold View - Front



Product Fold View - Back



Product Body Front View



Product Body Back View

	
<p>Product Bottom Front View</p>	<p>Product Bottom Back View</p>
	<p>N/A</p>
<p>Product View</p>	
<p>04. 372- G Printed Easy 2pc Set-SPR23</p>	
	
<p>Product Front View</p>	<p>Product Back View</p>



Polybag Sticker View



Product polybag open view



Product Fold View - Front



Product Fold View - Back



Product Body Front View



Product Body Back View



Product Bottom Front View



Product Bottom Back View



Product View

N/A

04. Trims & Construction View



Label View - Body



Label View - Bottom



Label View



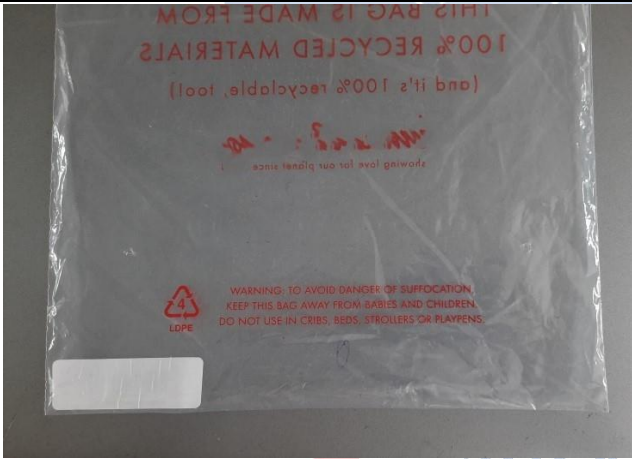
Label View



Label View



Poly Bag View Front



Poly Bag View Back



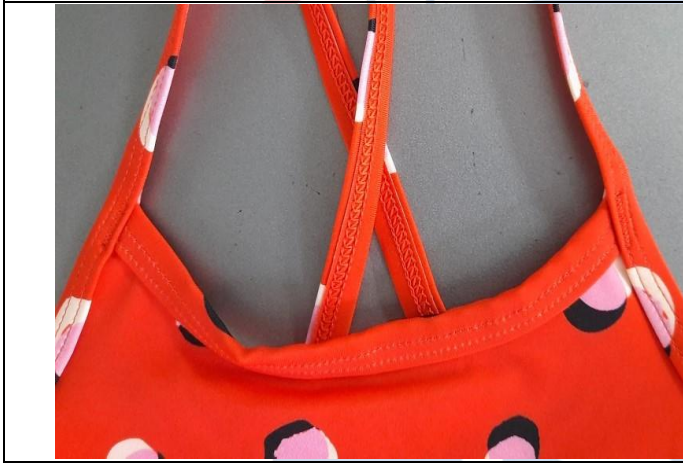
Bar tack View's



Bar tack View's



Bar tack View's



Bar tack View's



Bar tack View's



Hygienic Liners View



Product View



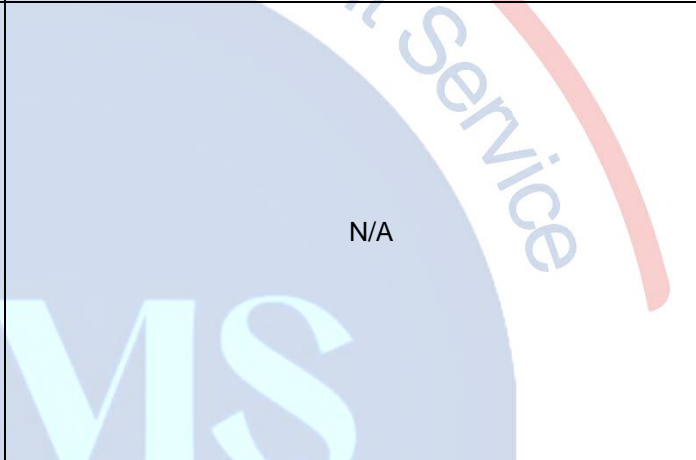
Product View



Product View



Product View



N/A

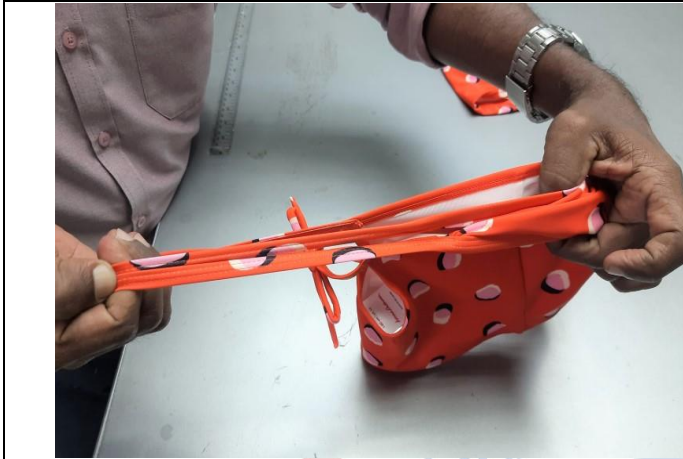
05. Photo of On - Site Test



Seam Test



Pull Test



Pull Test



Pull Test



Color Lot Check



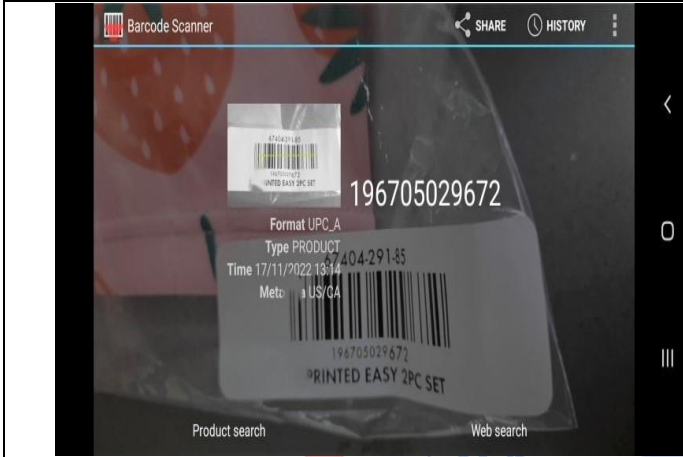
Metal Detection Test



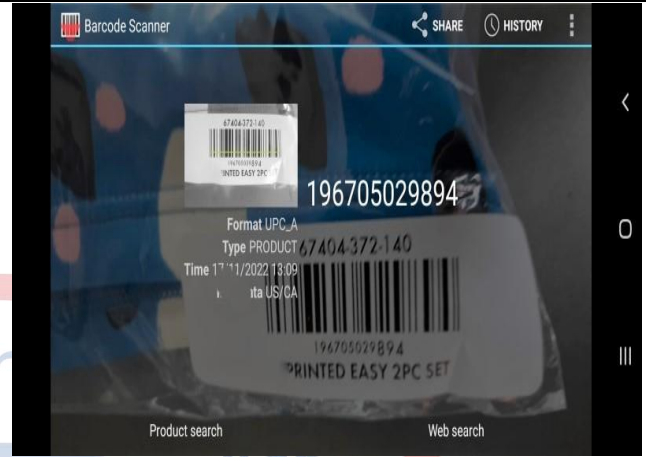
SPI Check



Carton Drop Test



Barcode Scanning



Barcode Scanning

06. Photo of General View



Factory Name Board



Factory Front View



Factory Product Line



Packing View

INSPECTOR:

IQ10002

AUDITOR:

IQA20003

***** END OF REPORT *****

The findings in this document reflect the results of IQMS at the time and place of inspection only. No evidence of actual shipment is provided or implied. This report does not release the vendor or manufacturer from any obligations to repair, replace, or compensate for any defective product or part. IQMS assumes no responsibility or liability for any defects beyond the detectable limits of the specific inspection services ordered by the client. For more information on limitation of liability, please visit www.iqms.asia.